

Read these instructions before installation and retain for future reference. This equipment should be installed by a competent electrician



Important Information

We recommend that luminaires are installed by a qualified electrician ensuring the installation complies with current IEE wiring regulations BS7671:2018 & local building control.

- All tests should be carried out in accordance to EN 50172:2004.
- BELL will not accept responsibility for any claims arising from a poor installation.
- The light source of this luminaire is not replaceable: when the light source reaches end of life, the whole luminaire must be replaced.
- Not suitable for petrochemical installations.
- Upgrading of MCB may be necessary

Warning Before installation ensure power is disconnected.

This product may contain substances that can be hazardous to the environment if not disposed of properly. Electrical and electronic equipment should never be disposed of with general household waste but must be separated for its correct treatment and recovery. Where possible recycle your packaging.

Features

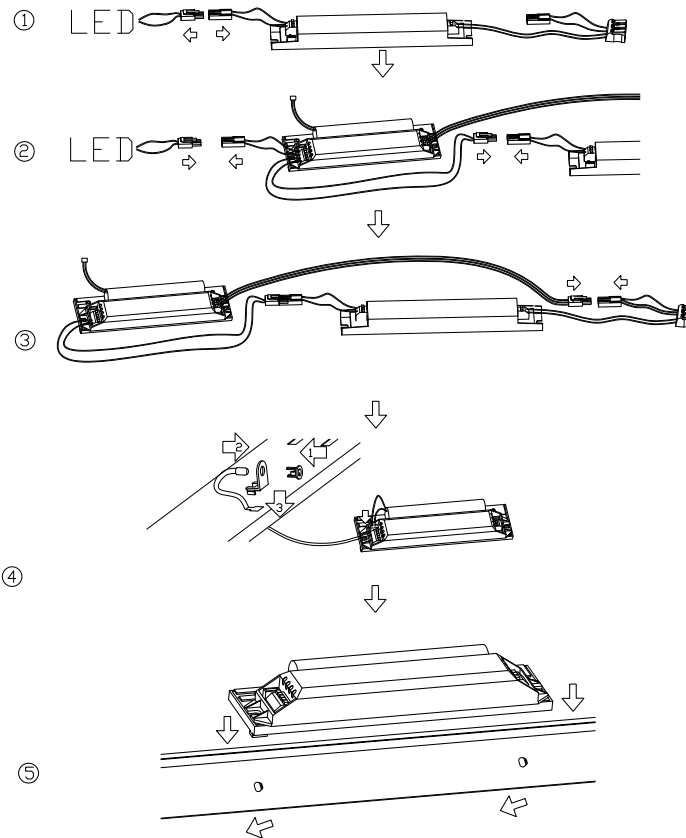
Output Power 2.5W
Insulation Class II
Emergency duration 3 Hours
Battery recharge time 16 hours
Deep discharge protection
Self Test Switchable

Specification

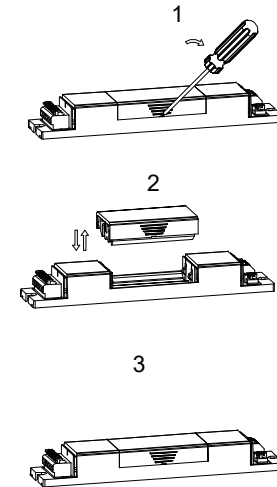
Rated voltage 220-240V Ac
Mains frequency 50/60 Hz
Ambient temp 5°C +50°C
Maximum casing temperature 70°C



1. Disconnect the plug between the driver and the LED strip.
2. Plug in the two-pole connectors with the emergency module respectively.
3. Plug in the three-pole connector with the terminal.
4. Plug in the battery connector and fix the indicator as arrows 1,2 & 3.
5. Fix the emergency pack on the tray.



Battery Replacement



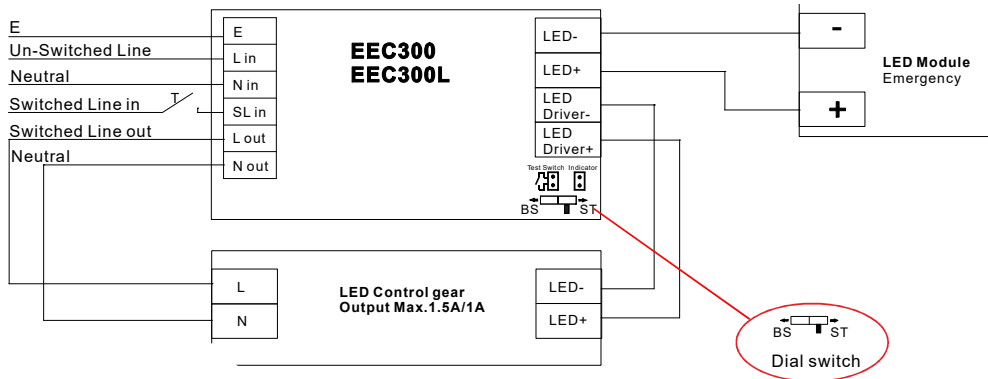
Step 1: As shown in the diagram, insert a screwdriver into the hole and rotate to pry the battery box loose.

Step 2: Take out the battery cartridge to be replaced upwards.

Step 3: Snap the new battery cartridge down to complete the battery cartridge installation.

Note:

The battery should be changed when the required duration is not reached
The battery is replaceable
DO NOT cover with insulation



Note:

Use the switch to change between basic test & self test

Step 1: Before you switching the BS/ST function, please disconnect the L/N and battery cable.

Step 2: Switch the product mode through the switch indicated by the arrow.

Step 3: Turn the switch down to switch the product to standard mode.

Step 4: Turn the switch up to switch the product to self-test mode.

Notice:

The function switching shall only be operated after L/N and battery cable are disconnected.

Indicator LED System status is by a bi-color indicator LED.

LED Indication	Status	Description
Permanent Green	Standby ,System OK	Mains Operation, battery is charged
Fast flashing Green (0.25s on 0.25s off)	Function test underway	Function test underway
Slow flashing Green (1s on 1s off)	Duration test underway	Duration test underway
Permanent Red	Lamp failure	Open Circuit or Short circuit or LED failure
Fast flashing Red (0.25s on 0.25s off)	Battery capacity failure	Battery failed duration test
Slow flashing Red (1s on 1s off)	Battery fault	Incorrect battery voltage or Short circuit or Open Circuit
Green and Red off	Battery Operation	Emergency mode: Mains disconnected or Mains failure

Testing/Commissioning(self test)

Functionality of the test button

- 1) A short press (>1s) on the button start a function test lasting 5 seconds (The battery's capacity should be more than 5%=charging 30mins)
- 2) Holding down the button(>10s) resets the timer(System-reset)

Function test

The 5 second long, each 7 days' function test serves to check the functionality of the emergency unit, the batteries and LED module.

Notice. If a mains supply failure occurs while a function test is in progress, the test will be postponed and the system will enter emergency operation. Following restoration of the mains supply, a postponed functional test will re-commence automatically as soon as conditions permit.

Duration Test

First test: After 24 hours of AC mains power input, the emergency lighting unit will enter into a 3-hour duration test.

Half year duration test: Conduct 3-hour duration test every 180-182 days to check the battery capacity.

Notice. A duration test will only be started when the battery supply is fully charged. If a mains supply failure occurs while a duration test is in progress, the test will be postponed and the system will enter emergency operation. Following restoration of the mains supply, the postponed duration test will re-commence automatically when the battery supply is fully re-charged.

The indicator will be slow flashing Green for 5 days if the duration test is carried out successfully.

Notice.

Once the error has been corrected, reconnect the battery and then re apply the mains power. The indicator LED will switch back to green with the mains power on.

Notice.

After exchanging the battery hold down the test button for 10 seconds and the indicator LED will switch to Green.

Testing & Commissioning for Emergency Luminaire

- Ensure the Load is connected.
- Connect the battery.
- Switch on the Unswitched Supply
 - Check the Charge LED illuminates.
- Switch on the Maintained Supply
 - Check the LED illuminates as normal.
- Switch off the Maintained Supply.
- Switch off the Unswitched Supply
 - Check the Charge LED extinguishes and the load LED illuminates at a reduced output.
- Enter the commissioning date on the Battery Pack.
Switch on the Unswitched Supply

Luminaire Ref/Location		In Case of difficulty, contact the Installation Engineers:- Tel: _____								
Full Recharge Time 24 Hours		Duration 3 Hours				Lamp Type - LED				
ROUTINE TEST RECORD										
	Year 1		Year 2		Year 3		Year 4		Year 5	
Monthly Test	Signed	Date	Signed	Date	Signed	Date	Signed	Date	Signed	Date
Functional										
Functional										
Functional										
Functional										
Functional										
Functional										
Functional										
Functional										
Functional										
Functional										
Functional										
Functional										
Three Hour										